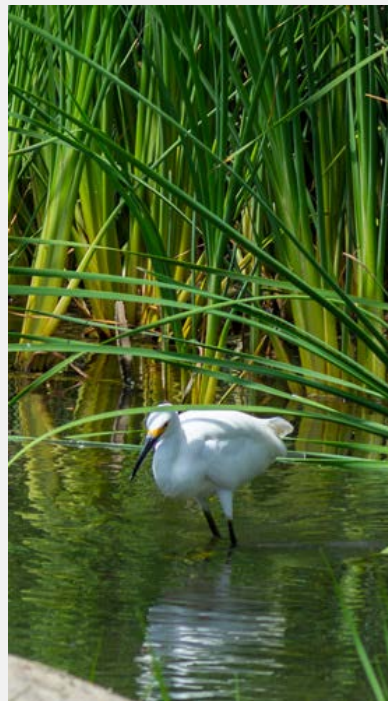




Stanislaus County Agricultural Advisory Board

March 2, 2020

Chris White, Executive Director SJRECWA



---

# DEL PUERTO CANYON RESERVOIR

---

**Water for the Economy**

**Water for the Environment**

**Storage for the Future**

# California & the Central Valley's Agriculture

- More than 250 crops grown in the Central Valley with an estimated value of \$17B per year
- Using fewer than 1% of U.S. farmland, the Central Valley supplies 8% of U.S. agricultural output (by value), California accounts for 2/3 of the Nation's fruit and nut production and 1/3 of the Nation's vegetable production.
- Over 400 crops are grown in California. The predominate crop types are cereal grains, hay, cotton, tomatoes, vegetables, citrus, tree fruits, nuts, table grapes, and wine grapes.



**The Project Partners: Del Puerto Water District/San Joaquin River Exchange Contractors Water Authority**

**Combined Agricultural Acreage Serviced: 295,000 acres**

**Project Partners' supplies all originate from the Federal Central Valley Project (CVP) and are delivered from the Delta-Mendota Canal (DMC)**

**Need for Storage:**

**\* DPWD has limited access to Storage in San Luis Reservoir under its USBR Water Service Contract**

**\* SJRECWA has no Contractual Rights to storage in SLR**

# Project Purpose and Features

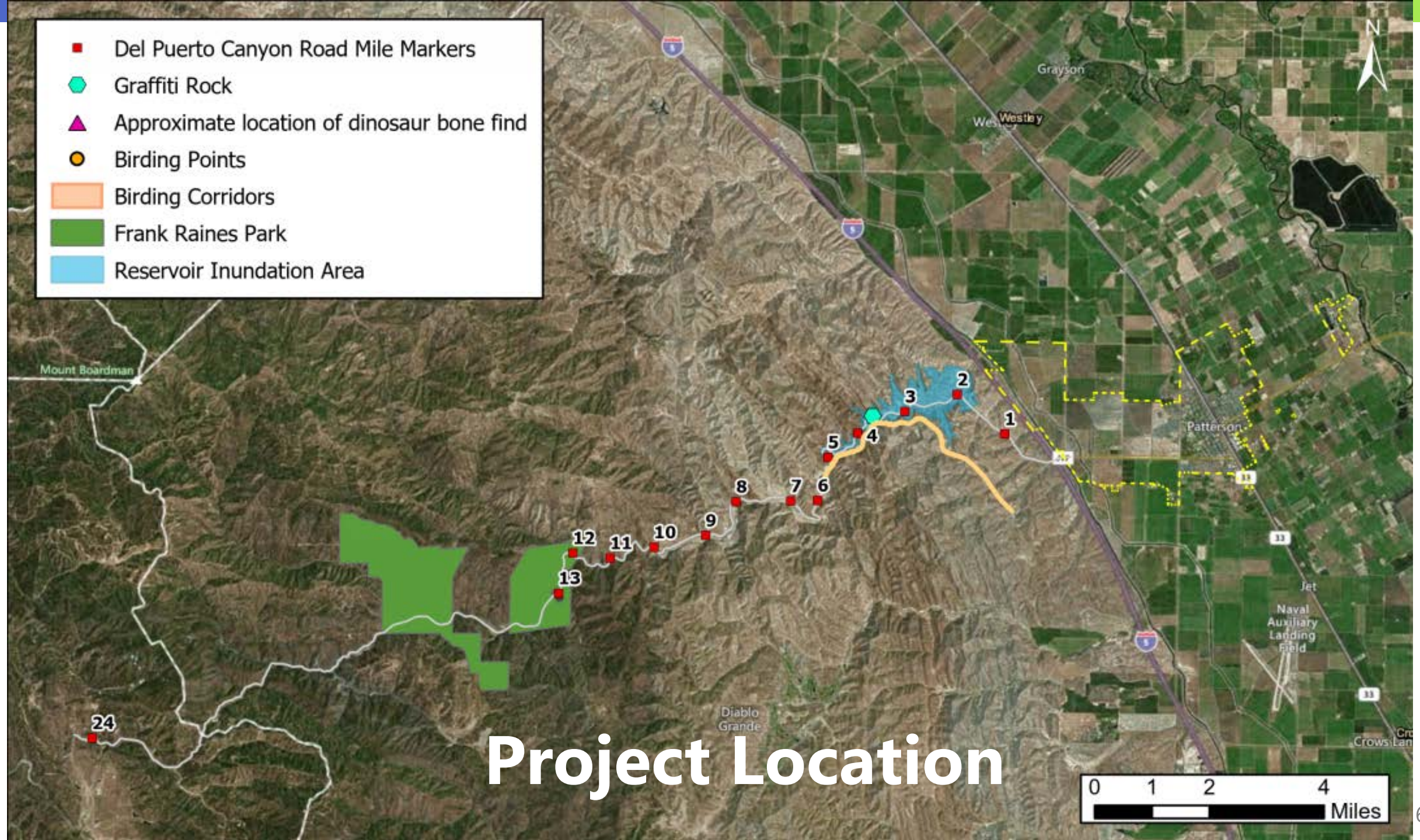




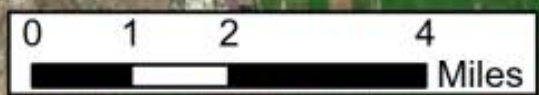
# Project Benefits

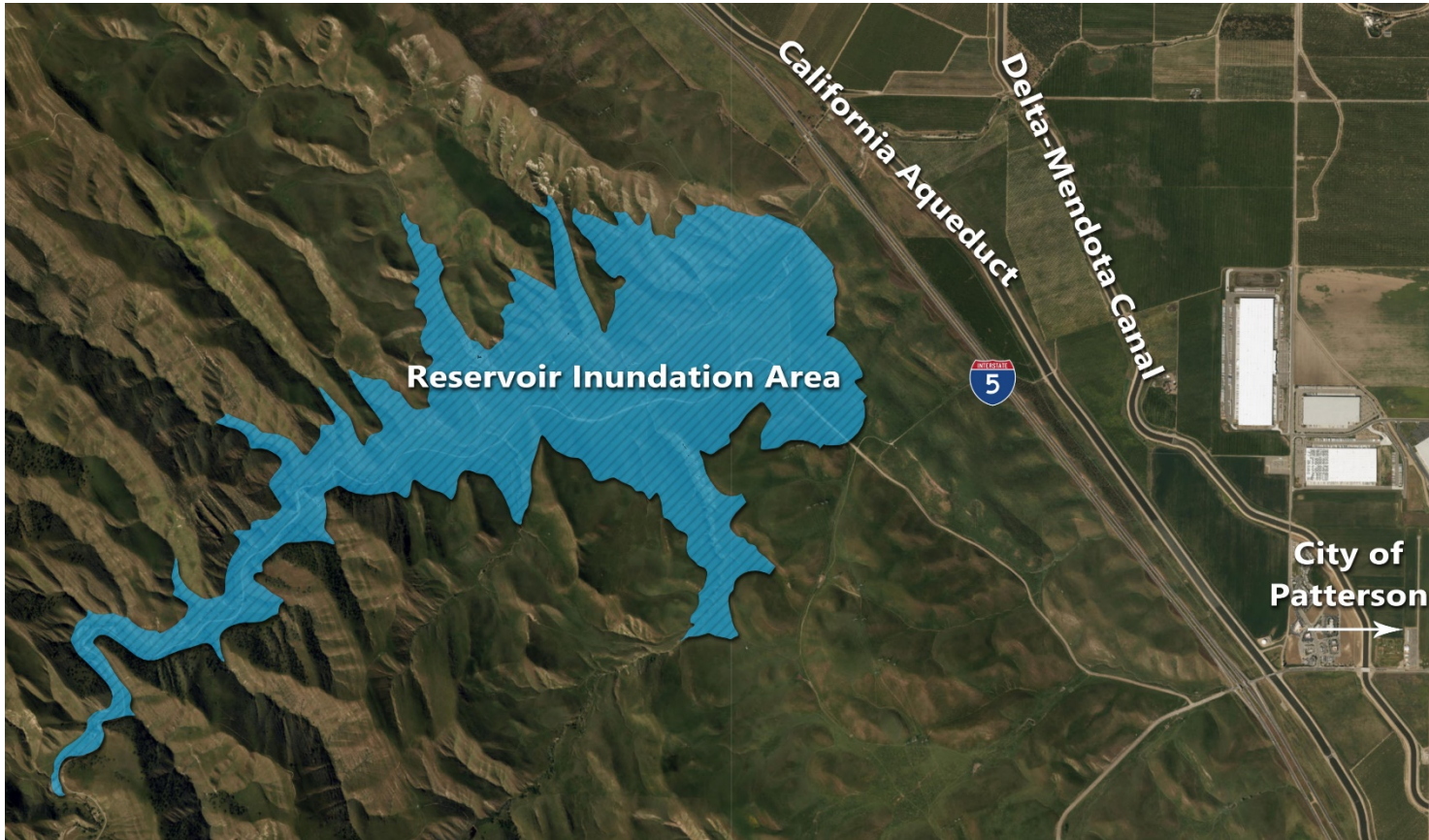
- Water
  - Agriculture
  - Groundwater Management
- Environment
  - Wildlife Refuges
- Public Safety
  - Flood Protection
- Regional Economy
- Flexibility to Adapt to Future Changes

- Del Puerto Canyon Road Mile Markers
- ◆ Graffiti Rock
- ▲ Approximate location of dinosaur bone find
- Birding Points
- ▭ Birding Corridors
- ▭ Frank Raines Park
- ▭ Reservoir Inundation Area



# Project Location





# Del Puerto Canyon Reservoir

- Locally owned and controlled by public water agencies
- 82,000 acre-feet of storage
- 260-foot dam and three saddle dams
- Filled from Delta-Mendota Canal (DMC)
- Supplies water to farmers and wildlife refuges served by the Central Valley Project via DMC

# Proposed Reservoir Operations

- Reservoir fill:
  - From scheduled CVP deliveries, or
  - Conserved or developed water for transfer
- Reservoir draws:
  - Meet irrigation demands / Dry year reliability
  - Transfers to other CVP contractors/refuges
- Operations within Coordinated Operating Agreement
  - No impacts to CVP or State Project Operations





# Comments at City Council Meeting



Flooding and Dam Safety



Canyon Resources



Construction Impacts



Alternatives



Consistency with Current Plans



All comments on the Draft EIR will be addressed in the Final EIR

Continuing to provide information to address community concerns

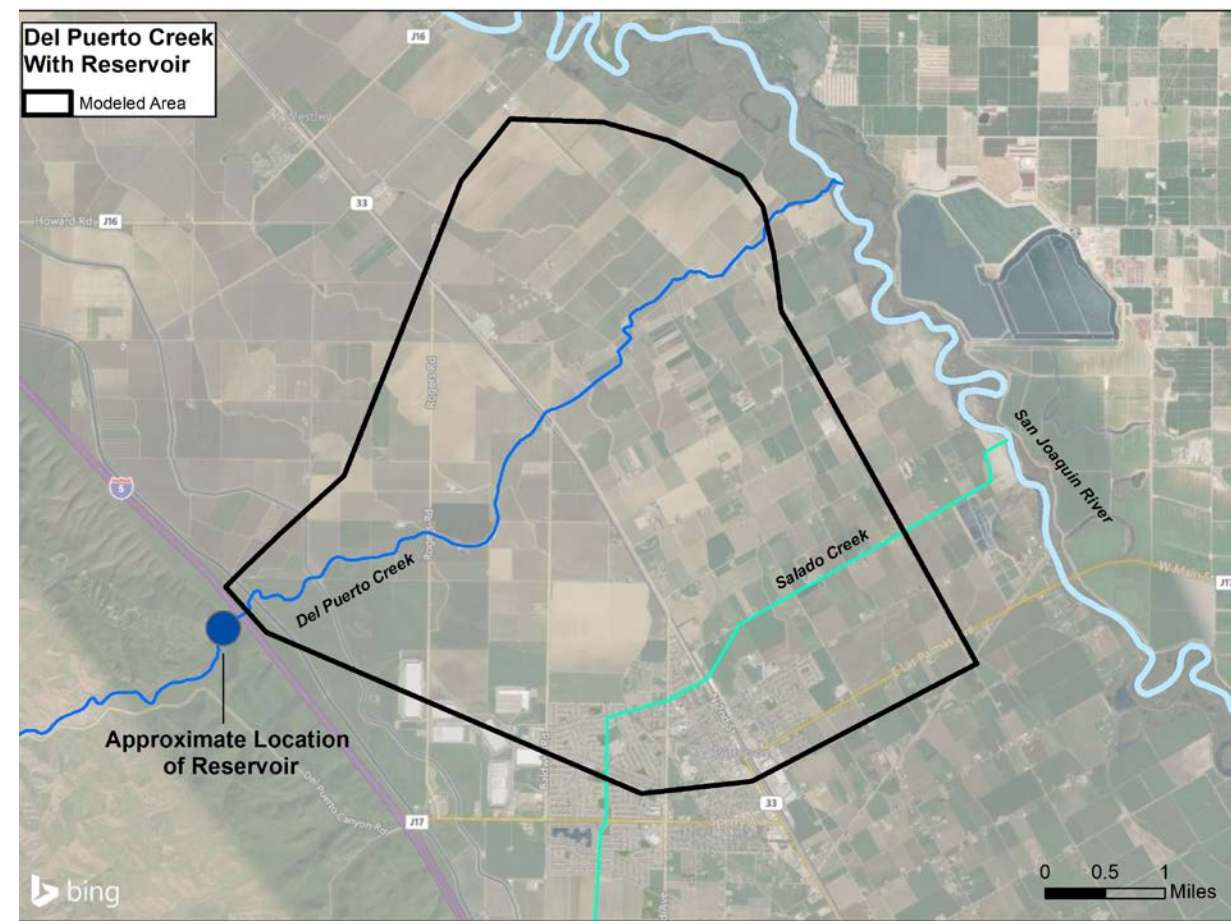
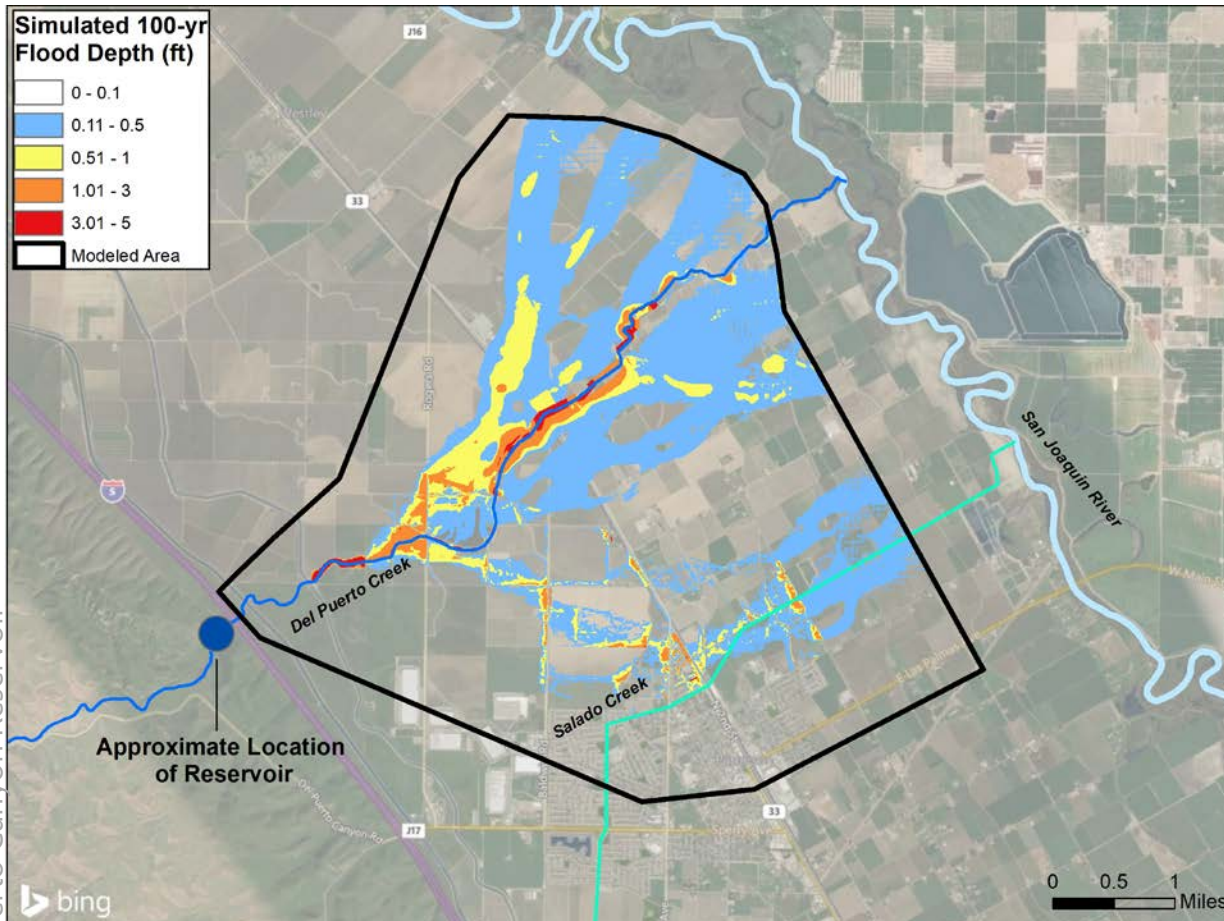
- City Council tonight
- Community meetings (next one March 25)
- Project information: fact sheets, website, local media, and other avenues

# Addressing Community Concerns

# The Project Prevents 100-Yr Flood Events

PRE-PROJECT

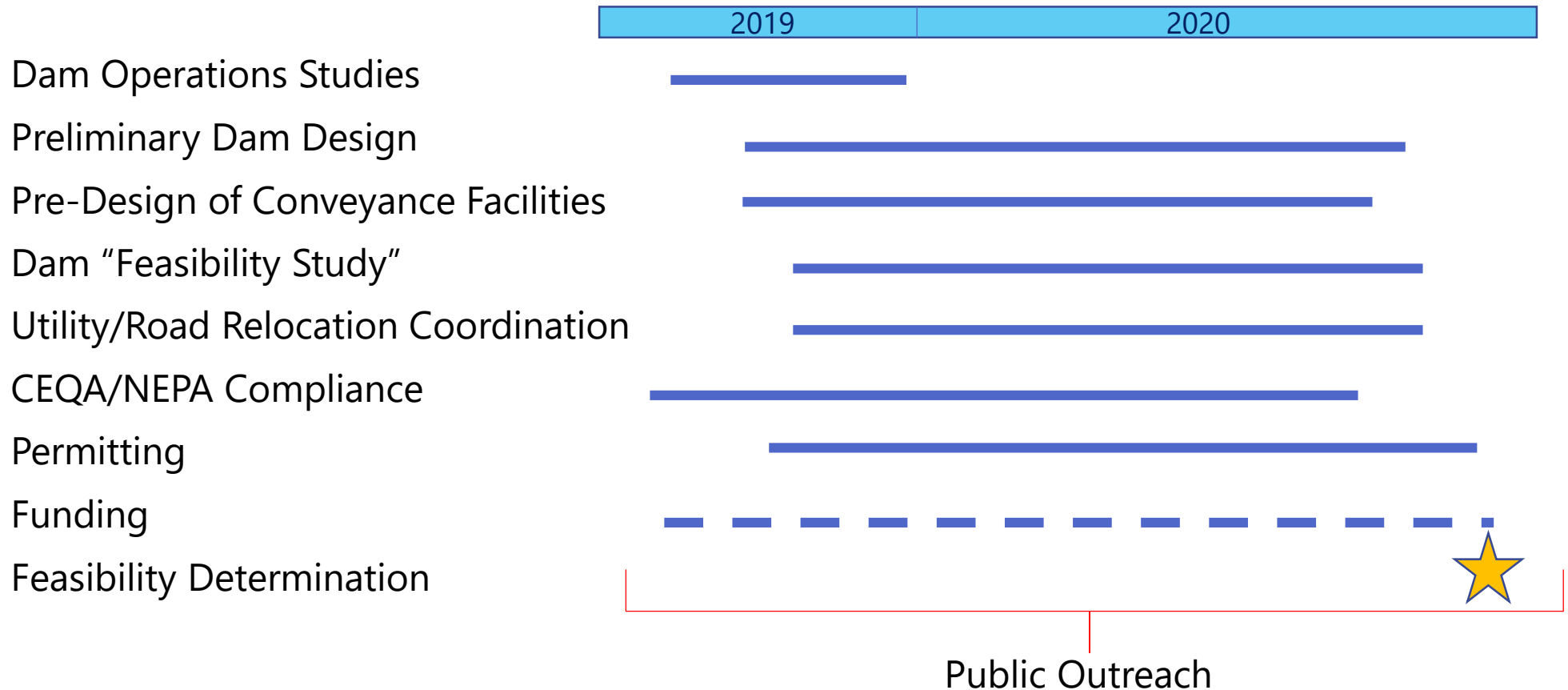
POST-PROJECT



*This flood analysis shows only flooding from Del Puerto Creek*

# Current Schedule

**Probable start of construction is in 2021/2022**



# WIIN Act Funding

- Federal participation in a State-led storage project up to 25% of the total cost where at least a proportional share of the project benefits are Federal benefits
- Governor must request participation of the Secretary of the Interior.
- Project has been given a consistency finding with the Goals and Guidelines of Prop 1 from the California Water Commission.
- State or local sponsor determines, and the Secretary concurs, that the project is technically and financially feasible, sufficient non-Federal funding is available, and the project sponsors are financially solvent
- Del Puerto Canyon Reservoir Project has been awarded \$1.5 Million from the Federal WIIN Act for the feasibility study.
- Project is named in Congressman Harder's HR-2473 S.A.V.E. Water Resources Act



# Permitting & Environmental

- CEQA/NEPA Compliance
  - Complete California Environmental Impact Report
  - Federal Environmental Impact Statement
- Agency Consultation and Compliance
  - State Historic Preservation Office
  - CA Fish & Wildlife
  - US Fish & Wildlife
  - United States Army Corps of Engineers
  - State and Regional Water Quality Control Boards
  - United States Bureau of Reclamation
  - California Division of Dam Safety

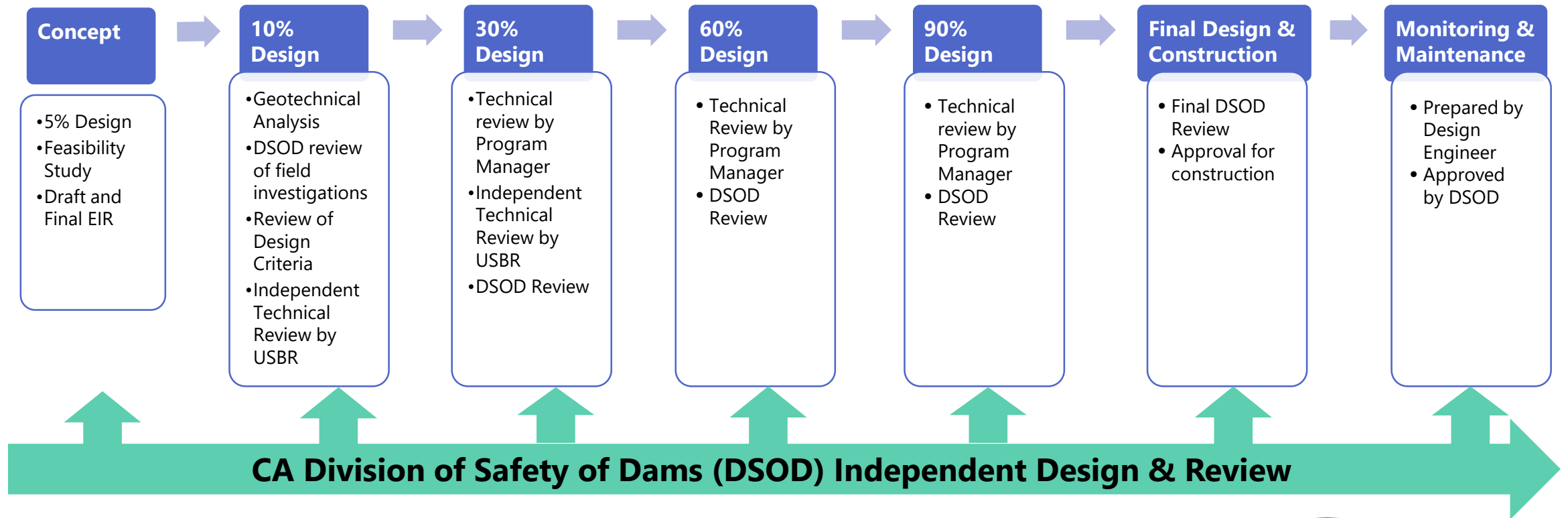


# Permitting & Environmental

- Environmental Impact Report (EIR) Evaluations
  - Aesthetics, Agriculture & Forestry Resources, Air Quality,
  - Biological Resources – Terrestrial & Fisheries,
  - Cultural Resources, Energy Resources, Geology & Soils,
  - Greenhouse Gas Emissions, Hazards and Hazardous Materials,
  - Hydrology & Water Quality, Land Use & Recreation,
  - Traffic & Transportation, Tribal Cultural Resources, Utilities
  - and Service Systems, Environmental Justice, and Indian
  - Trust Assets
- Public Comment Period Closed on January 27, 2020.
  - Project team working of response to comments



# Dam Design Process



## Key Features

- Mitigation Commitments for Design Safety in Final EIR
- Continuous DSOD Review
- Independent Analyses by DSOD





# Preliminary Design Approach

- DWR Division of Safety of Dams
  - Mandated Design Standards
  - Seismic analysis
  - Inundation analysis
  - Spillway capacity analysis
  - Structural design review
- Stanislaus County Department of Public Works
  - Del Puerto Canyon Road relocation
- City of Patterson
  - Zacharias Road / Industrial Business Park Expansion



# Other Challenges

- Relocation of Major Utilities
  - Power transmission
  - Gas & petroleum transmission
  - Communications
- Coordination with Multiple Agencies
  - Local
  - County
  - State
  - Federal





---

# Questions?

---