

AGRICULTURAL CROP REPORT

1989

STANISLAUS COUNTY DEPARTMENT OF AGRICULTURE

1989 ANNUAL CROP REPORT

**Keith L. Mahan
Agricultural Commissioner**

**The Honorable Board of Supervisors
County of Stanislaus**

**Lamar Bartholomew
Chief Administrative Officer**

Pen and Ink Drawings by Nancy Niemeyer

May 16, 1990

Henry J. Voss, Director
State of California
Department of Food and Agriculture
1220 N Street, Room 409
Sacramento, CA 94271-0001

The Honorable Board of Supervisors
Stanislaus County
1100 H Street
Modesto, CA 95354

Gentlemen:

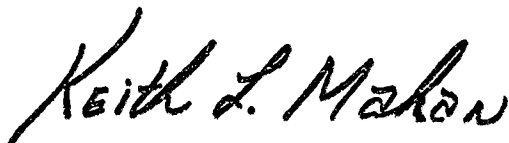
The Stanislaus County Agricultural Report for 1989 is hereby submitted in compliance with Section 2279 of the California Food and Agricultural Code.

The Stanislaus County estimated gross agricultural income for 1989 reached a record high of \$963,147,000. This is an increase of \$49,404,000 over 1988's revised figure. The Fruit and Nut category experienced the greatest loss with almonds and peaches exhibiting a downward trend primarily due to a smaller crop. Walnuts, grapes and apples all increased. The largest increases were found in the livestock & poultry categories. Another very healthy increase is found in the vegetable crop grouping with melons leading the way.

It must be reiterated that the figures in this report represent GROSS income to the grower and do not reflect the cost of production.

We wish to express our appreciation to the many persons who contributed to this document with special thanks to Sherce Tillema, Senior Agricultural Inspector, who compiled the 1989 Agricultural Report.

Respectfully,



KEITH L. MAHAN
Agricultural Commissioner
Department of Agriculture
Stanislaus County



PHILIP P. OSTERLI
Director
Cooperative Extension
Stanislaus County

TABLE OF CONTENTS

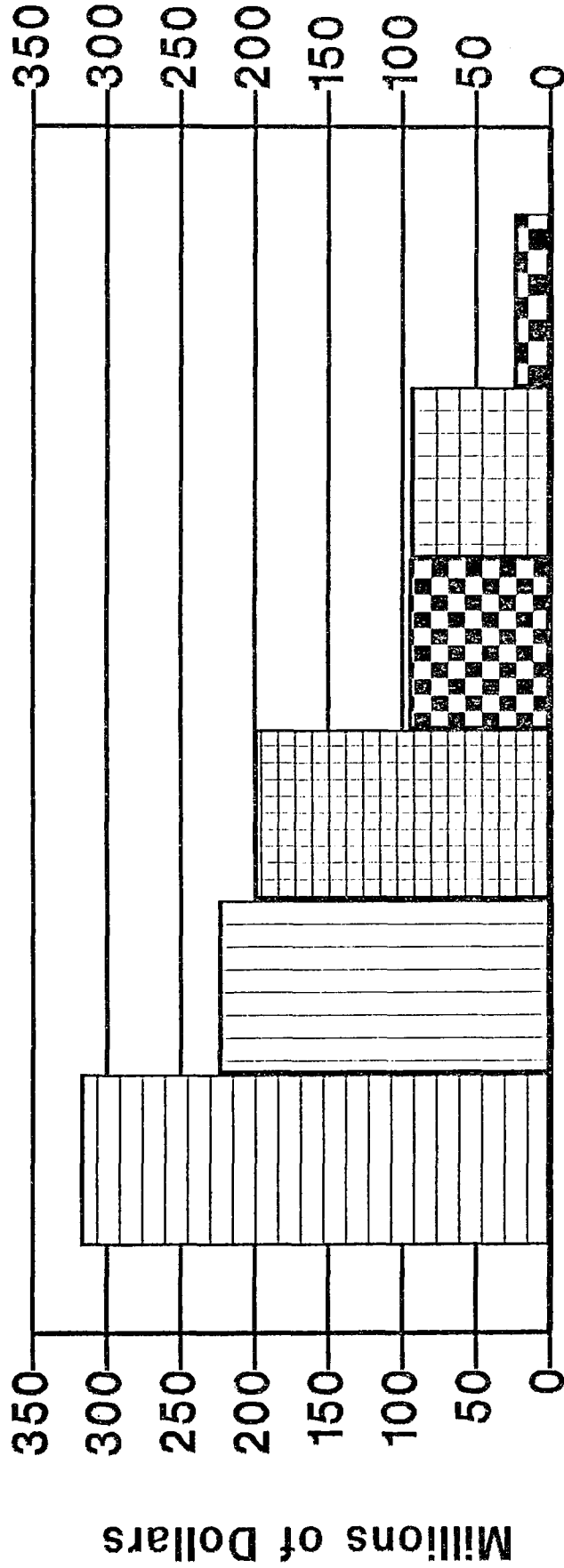
20 Leading Commodities	1
Crop Report Summary Chart	2
Permanent Crop Acreages	3
Fruit and Nut Crops	5
Field Crops	6
Vegetable Crops	8
Seed Crops	9
Nursery Products	10
Apiary Products	11
Livestock and Poultry	11
Livestock and Poultry Products	13
Summary	14
Ten Year Summary Chart.	15
Ten Year Summary	16

STANISLAUS COUNTY 20 LEADING COMMODITIES

<u>1989 Rank</u>	<u>Commodity</u>	<u>Value</u>	<u>1988 Rank</u>
1	Milk, All	\$ 258,760,000	1
2	Chickens, All	111,140,000	3
3	Almond Meats	93,971,000	2
4	Cattle & Calves, All	58,941,000	4
5	Chicken Eggs, All	56,173,000	6
6	Tomatoes, All	45,741,000	5
7	Peaches, All	33,733,000	7
8	Walnuts, Inshell	33,345,000	9
9	Turkeys, All	29,493,000	10
10	Beans, Dry, All	26,820,000	8
11	Grapes, Crushed, All	26,192,000	11
12	Alfalfa	22,875,000	14
13	Melons, All	19,884,000	17
14	Silage, All	19,789,000	12
15	Apricots	19,242,000	13
16	Nursery Stock (Fruits & Nut Trees & Vines)	10,886,000	15
17	Pasture, Irrigated	10,512,000	16
18	Beans, Green Lima	9,300,000	19
19	Almond Hulls	7,112,000	18
20	Rangeland	5,904,000	21

Stanislaus County 1989

Crop Summary by Crop Categories



Crop Categories

- ▨ Livestock & Poultry
- ▨ Livestock & Poultry
- ▨ Vegetable Crops
- ▨ Fruit & Nut Crops
- ▨ Field Crops
- ▨ Nursery, Apiary & Seed



PERMANENT CROP ACREAGES

	Year	Bearing Acres	Non-Bearing Acres	Total
Almonds	1989	67,800	5,281	73,081
	1988	65,261	2,528	67,789
Apples	1989	880	293	1,173
	1988	760	290	1,050
Apricots	1989	7,110	1,600	8,710
	1988	8,250	520	8,770
Avocados	1989	17	2	19
	1988	2	0	2
Boysenberries	1989	130	0	130
	(Rev) 1988	145	0	145
Cherries	1989	968	322	1,290
	1988	737	220	957
Citrus	1989	183	6	189
	1988	204	15	219
Figs	1989	5	0	5
	1988	10	0	10
Grapes, All	1989	16,196	1,214	17,410
	(Rev) 1988	16,704	433	17,137
Raisin	1989	1,220	5	1,225
	1988	1,435	4	1,439
Table	1989	23	0	23
	1988	19	15	34
Wine, Red	1989	6,328	571	6,899
	1988	6,550	139	6,689
Wine, White	1989	8,625	638	9,263
	(Rev) 1988	8,700	275	8,975
Guava/Feijoa	1989	8	30	38
	1988	8	60	68
Kiwi	1989	247	11	258
	(Rev) 1988	300	8	308

*Rev - Revised

PERMANENT CROP ACREAGES Continued

	Year	Bearing Acres	Non-Bearing Acres	Total
Nectarines	1989	107	21	128
	1988	140	15	155
Olives	1989	4	0	4
	1988	28	0	28
Peaches, All	1989	9,785	1,072	10,857
	1988	10,675	440	11,115
Cling	1989	8,611	1,017	9,628
	1988	9,250	418	9,668
Freestone	1989	1,174	55	1,229
	1988	1,425	22	1,447
Pears	1989	73	3	76
	1988	206	5	211
Pecans	1989	29	7	36
	1988	36	9	45
Persimmons	1989	25	25	50
	1988	20	0	20
Pistachios	1989	61	100	161
	(Rev) 1988	57	69	126
Plums	1989	71	15	86
	1988	31	6	37
Prunes	1989	93	35	128
	1988	136	15	151
Walnuts	1989	24,345	2,235	26,580
	1988	23,909	1,975	25,884
Total	1989	128,137	12,272	140,409
	(Rev) 1988	127,619	6,608	134,227



FRUIT & NUT CROPS

Production

Value

	Year	Harvested Acres	Production		Unit	Value	
			Per Acre	Total		Per Unit	Total
Almond Meats	1989	67,800	1,260.00	85,428,000	LBS	\$ 1.10	\$ 93,971,000
	1988	65,261	1,750.00	114,207,000	LBS	1.00	114,207,000
Almond Hulls	1989			112,000	TON	63.50	7,112,000
	1988			150,000	TON	58.00	8,700,000
Apples	1989	880	8.50	7,480	TON	334.00	2,498,000
	(Rev) 1988	760	7.85	5,970	TON	330.00	1,970,000
Apricots	1989	7,110	10.10	71,800	TON	268.00	19,242,000
	(Rev) 1988	8,250	8.75	72,200	TON	285.00	20,577,000
Boysenberries	1989	130	4.18	543	TON	1,350.00	733,000
	(Rev) 1988	145	5.00	725	TON	1,150.00	834,000
Cherries	1989	968	3.86	3,740	TON	1,490.00	5,573,000
	(Rev) 1988	737	4.75	3,500	TON	1,750.00	6,125,000
Grapes, Crushed All	1989	16,173		152,000	TON		26,192,000
	(Rev) 1988	16,685		154,000	TON		25,885,000
Red Varieties	1989	6,328	9.25	58,500	TON	200.00	11,700,000
	(Rev) 1988	6,550	8.50	55,700	TON	170.00	9,469,000
White Varieties	1989	9,845	9.50	93,500	TON	155.00	14,492,000
	(Rev) 1988	10,135	9.70	98,300	TON	167.00	16,416,000
Kiwi	1989	247	3.89	961	TON	1,500.00	1,442,000
	(Rev) 1988	300	3.70	1,110	TON	1,550.00	1,720,000
Nectarines	1989	107	8.40	899	TON	681.00	612,000
	(Rev) 1988	140	7.25	1,020	TON	565.00	576,000
Peaches, All	1989	9,785		160,800	TON		33,733,000
	(Rev) 1988	10,675		221,400	TON		46,510,000
Cling	1989	8,611	16.00	138,000	TON	219.00	30,222,000
	(Rev) 1988	9,250	20.50	190,000	TON	220.00	41,800,000
Freestone	1989	1,174	19.40	22,800	TON	154.00	3,511,000
	(Rev) 1988	1,425	22.00	31,400	TON	150.00	4,710,000
Walnuts, In- Shell	1989	24,345	1.44	35,100	TON	950.00	33,345,000
	(Rev) 1988	23,909	1.28	30,600	TON	1,000.00	30,600,000

FRUIT & NUT CROPS Continued

	Year	Production				Value	
		Harvested Acres	Per Acre	Total	Unit	Per Unit	Total
Miscellaneous (1)	1989	592			ACRE	\$ 2,400.00	\$ 1,421,000
(Rev) 1988		757			ACRE	2,000.00	1,514,000
Total	1989	128,137					\$225,874,000
	(Rev) 1988	127,619					259,218,000

(1) Includes Avocados, Citrus, Figs, Guava, Olives, Pears, Pecans, Persimmons, Pistachios, Plums, Prunes, Table Grapes



FIELD CROPS

	Year	Production				Value	
		Harvested Acres	Per Acre	Total	Unit	Per Unit	Total
Barley	1989	5,494	1.80	9,890	TON	\$ 111.00	\$ 1,098,000
	1988	4,100	1.60	6,560	TON	120.00	787,000
Beans, Dry Edible, All	1989	31,213		39,820	TON		26,820,000
(Rev) 1988		33,105		44,610	TON		32,100,000
Blackeyes	1989	7,902	.91	7,190	TON	503.00	3,617,000
(Rev) 1988		9,990	1.45	14,500	TON	600.00	8,700,000
Baby Limas	1989	6,176	1.56	9,630	TON	597.00	5,749,000
(Rev) 1988		12,700	1.35	17,100	TON	760.00	12,996,000
Large Limas	1989	9,543	1.30	12,400	TON	793.00	9,833,000
(Rev) 1988		6,500	1.25	8,120	TON	920.00	7,470,000
Others (1)	1989	7,592	1.39	10,600	TON	719.00	7,621,000
(Rev) 1988		3,915	1.25	4,890	TON	600.00	2,934,000
Corn, Grain	1989	1,500	4.00	6,000	TON	110.00	660,000
(Rev) 1988		1,970	3.96	7,800	TON	120.00	936,000

FIELD CROPS Continued

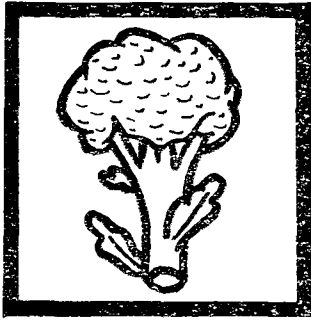
	Year	Harvested Acres	Production			Value	
			Per Acre	Total	Unit	Per Unit	Total
Hay, Alfalfa	1989	31,000	7.50	232,000	TON	\$ 98.60	\$ 22,875,000
	(Rev) 1988	30,328	7.00	212,000	TON	90.00	19,080,000
Hay, Grain	1989	13,700	3.24	44,400	TON	74.00	3,286,000
	1988	15,900	3.00	47,700	TON	75.00	3,578,000
Hay, Other (2)	1989	2,700	1.60	4,320	TON	79.00	341,000
	(Rev) 1988	2,215	5.40	12,000	TON	60.00	720,000
Pasture, Irrigated	1989	72,500			ACRE	145.00	10,512,000
	(Rev) 1988	72,500			ACRE	130.00	9,425,000
Rangeland	1989	369,000			ACRE	16.00	5,904,000
	1988	369,000			ACRE	15.00	5,535,000
Rice	1989	2,205	3.14	6,920	TON	166.00	1,149,000
	(Rev) 1988	2,275	3.33	7,580	TON	175.00	1,326,000
Silage, All	1989	52,600		1,143,000	TON		19,789,000
	(Rev) 1988	59,125		1,212,000	TON		20,708,000
Cereal (3)	1989	20,600	12.60	260,000	TON	14.30	3,718,000
	(Rev) 1988	22,000	12.90	284,000	TON	14.10	4,004,000
Corn	1989	32,000	27.60	883,000	TON	18.20	16,071,000
	(Rev) 1988	37,125	25.00	928,000	TON	18.00	16,704,000
Sudan	1989	1,475	3.50	5,160	TON	65.00	335,000
	(Rev) 1988	1,585	3.35	5,310	TON	41.00	218,000
Sugar Beets	1989	1,579	34.40	54,300	TON	37.00	2,009,000
	(Rev) 1988	2,500	28.20	70,500	TON	32.00	2,256,000
Wheat	1989	6,850	2.00	13,700	TON	135.00	1,850,000
	(Rev) 1988	4,277	2.54	10,900	TON	120.00	1,308,000
Miscellaneous (4)	1989	672			ACRE	471.00	317,000
	(Rev) 1988	466			ACRE	165.00	76,900
Total	1989	592,488					\$ 96,945,000
	(Rev) 1988	599,346					98,053,900

(1) Includes Florida Butter, Henderson, Jackson, Kidney, Pink, Pinto

(2) Includes Bean, Pea, Volunteer

(3) Includes Barley, Forage Mix, Oats, Rye, Wheat

(4) Includes Milo, Popcorn, Safflower, Straw, Sunflowers



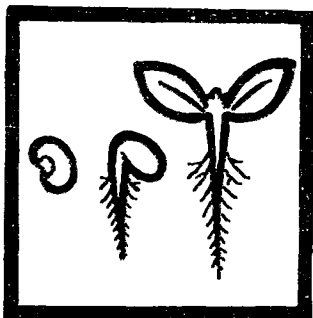
VEGETABLE CROPS

		Year	Harvested Acres	Production			Value	
				Per Acre	Total	Unit	Per Unit	Total
Beans, Green	Lima	1989	11,765	1.58	18,600	TON	\$ 500.00	\$ 9,300,000
	(Rev)	1988	10,350	1.60	16,600	TON	380.00	6,308,000
Beans, Snap		1989	2,300	3.25	7,480	TON	210.00	1,571,000
	(Rev)	1988	2,250	3.00	6,750	TON	190.00	1,282,000
Broccoli		1989	931	3.90	3,630	TON	370.00	1,343,000
		1988	1,075	3.60	3,870	TON	355.00	1,374,000
Cauliflower		1989	1,173	4.02	4,720	TON	432.00	2,039,000
	(Rev)	1988	875	4.20	3,680	TON	430.00	1,582,000
Melons, All		1989	8,205		98,550	TON		19,884,000
	(Rev)	1988	7,030		59,830	TON		9,042,000
Cantaloupe		1989	2,065	11.90	24,600	TON	240.00	5,904,000
	(Rev)	1988	2,350	8.50	20,000	TON	158.00	3,160,000
Casaba		1989	170	9.83	1,670	TON	250.00	418,000
	(Rev)	1988	290	7.90	2,290	TON	110.00	252,000
Crenshaw		1989	370	9.50	3,520	TON	260.00	915,000
	(Rev)	1988	310	6.50	2,020	TON	200.00	404,000
Honeydew		1989	3,650	10.90	39,800	TON	225.00	8,955,000
	(Rev)	1988	2,460	7.00	17,200	TON	160.00	2,752,000
Other, Musk (1)		1989	550	9.20	5,060	TON	260.00	1,316,000
		1988	720	6.00	4,320	TON	200.00	864,000
Watermelon		1989	1,400	17.10	23,900	TON	99.40	2,376,000
	(Rev)	1988	900	15.50	14,000	TON	115.00	1,610,000
Peas, Green Processing		1989	5,064	1.73	8,760	TON	221.00	1,936,000
	(Rev)	1988	4,300	1.70	7,310	TON	240.00	1,754,000
Peppers		1989	1,203	16.70	20,100	TON	165.00	3,316,000
	(Rev)	1988	975	16.50	16,100	TON	165.00	2,656,000
Spinach		1989	1,850	9.48	17,500	TON	75.70	1,325,000
		1988	2,430	10.00	24,300	TON	70.00	1,701,000
Squash (2)		1989	1,150	12.30	14,100	TON	124.00	1,748,000
	(Rev)	1988	900	17.00	15,300	TON	126.00	1,928,000

VEGETABLE CROPS Continued

	Year	Harvested Acres	Production		Unit	Value	
			Per Acre	Total		Per Unit	Total
Sweet Potatoes	1989	743	9.53	7,080	TON	\$ 412.00	\$ 2,917,000
(Rev) 1988		325	10.20	3,320	TON	400.00	1,328,000
Tomatoes, All	1989	15,152		430,400	TON		45,741,000
(Rev) 1988		15,224		437,200	TON		48,400,000
Fresh	1989	3,652	19.00	69,400	TON	373.00	25,886,000
(Rev) 1988		3,850	19.00	73,200	TON	425.00	31,110,000
Processing	1989	11,500	31.40	361,000	TON	55.00	19,855,000
(Rev) 1988		11,374	32.00	364,000	TON	47.50	17,290,000
Miscellaneous (3)	1989	2,300			ACRE	1,945.00	4,474,000
(Rev) 1988		1,600			ACRE	1,184.00	1,894,000
Total	1989	51,836					\$ 95,594,000
(Rev) 1988		47,334					79,249,000

- (1) Includes Juan Canary, Orange Flesh, Persian, Santa Claus
- (2) Includes Banana and Zucchini Squash, Pumpkins
- (3) Includes Cabbage, Carrots, Celery, Cucumbers, Eggplant, Lettuce, Onions, Spices, Table Beets



SEED CROPS

	Year	Harvested Acres	Unit	Value	
				Per Unit	Total
Vegetable	1989	341	ACRE	\$2,870.00	\$ 979,000
	1988	111	ACRE	3,000.00	333,000

SEED CROPS Continued

	Year	Harvested Acres	Unit	Value	
				Per Unit	Total
Other (1)	1989	2,500	ACRE	\$ 429.00	\$ 1,072,000
	1988	2,250	ACRE	550.00	1,238,000
Total	1989	2,841			\$ 2,051,000
	1988	2,361			1,571,000

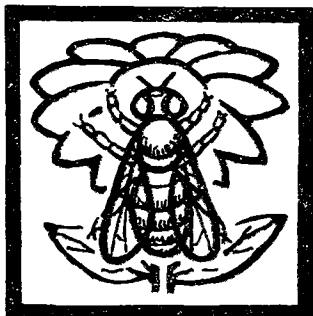
(1) Includes Beans, Oats



NURSERY PRODUCTS

	Year	Production		Unit	Value	
		Field Acres	Quantity Sold		Per Unit	Total
Deciduous Fruit & Nut Trees & Vines (Rev)	1989	270	3,456,000	PLNT	\$ 3.15	\$ 10,886,000
	1988	261	3,105,000	PLNT	3.17	9,843,000
Ornamental Trees & Shrubs (Rev)	1989		1,177,000	PLNT	2.81	3,307,000
	1988		1,255,000	PLNT	3.50	4,392,000
Christmas Trees (Rev)	1989		7,970	TREE	22.50	179,000
	1988		8,470	TREE	20.00	169,000
Miscellaneous (1) (Rev)	1989	767		ACRE	6,280.00	4,817,000
	1988	733		ACRE	7,220.00	5,292,000
Total	1989	1,037				\$19,189,000
	(Rev) 1988	994				19,696,000

(1) Includes Bedding, Fruit and Vegetable Plants, Cut Decoratives, House Plants, Turf



APIARY PRODUCTS

Year	Production		Value		
	Total	Unit	Per Unit	Total	
Beeswax	1989	2,000	LBS	\$.85	\$ 1,700
(Rev)	1988	2,000	LBS	.88	1,760
Bulk Bees	1989	10,000	LBS	4.00	40,000
(Rev)	1988	20,000	LBS	4.00	80,000
Honey	1989	30,000	LBS	.39	11,700
(Rev)	1988	30,000	LBS	.52	15,600
Pollination	1989	145,000	COL	28.00	4,060,000
	1988	144,000	COL	26.50	3,816,000
Queen Bees	1989	6,000	EACH	5.00	30,000
(Rev)	1988	26,000	EACH	4.95	129,000
Total	1989				\$ 4,143,400
(Rev)	1988				4,042,360



LIVESTOCK & POULTRY

Year	Production			Value		
	Number Of Head	Total Liveweight	Unit	Per Unit	Total	
Cattle & Calves, All	1989	180,625	926,800	CWT	\$ 58,941,000	
(Rev)	1988	180,360	774,000	CWT	49,085,000	
Beef Feeders (1)	1989	94,888	350,000	CWT	80.50	28,175,000
	1988	110,850	407,000	CWT	77.00	31,339,000

LIVESTOCK & POULTRY Continued

	Year	Production		Unit	Value	
		Number Of Head	Total Liveweight		Per Unit	Total
Beef Slaughter (2)	1989	46,112	98,800	CWT	\$ 72.40	\$ 7,153,000
	(Rev) 1988	47,810	105,000	CWT	46.50	4,882,000
Dairy Slaughter	1989	39,625	478,000	CWT	49.40	23,613,000
	(Rev) 1988	21,700	262,000	CWT	49.10	12,864,000
Sheep & Lambs	1989	4,420	4,860	CWT	66.20	322,000
	(Rev) 1988	5,000	6,000	CWT	66.50	399,000
Hogs & Pigs	1989	17,350	25,500	CWT	54.90	1,400,000
	(Rev) 1988	17,010	31,800	CWT	51.50	1,638,000
Chickens, All	1989	208,255,000				111,140,000
	(Rev) 1988	202,251,000				105,184,000
Chickens	1989	48,384,000	228,137,000	LBS	.34	77,567,000
	1988	49,651,000	230,879,000	LBS	.33	76,190,000
Chicks	1989	159,871,000		EACH	.21	33,573,000
	(Rev) 1988	152,600,000		EACH	.19	28,994,000
Turkeys, All	1989	3,703,000				29,493,000
	(Rev) 1988	3,425,000				26,542,000
Turkeys	1989	3,215,000	68,769,000	LBS	.42	28,883,000
	(Rev) 1988	2,894,000	61,932,000	LBS	.42	26,011,000
Poults	1989	488,000		EACH	1.25	610,000
	(Rev) 1988	531,000		EACH	1.00	531,000
Total	1989					\$ 201,296,000
	(Rev) 1988					182,848,000

(1) Includes Feedlot and Transient Feeder Gains, Beef Calves

(2) Includes Beef Cows and Bulls, Veal Calves



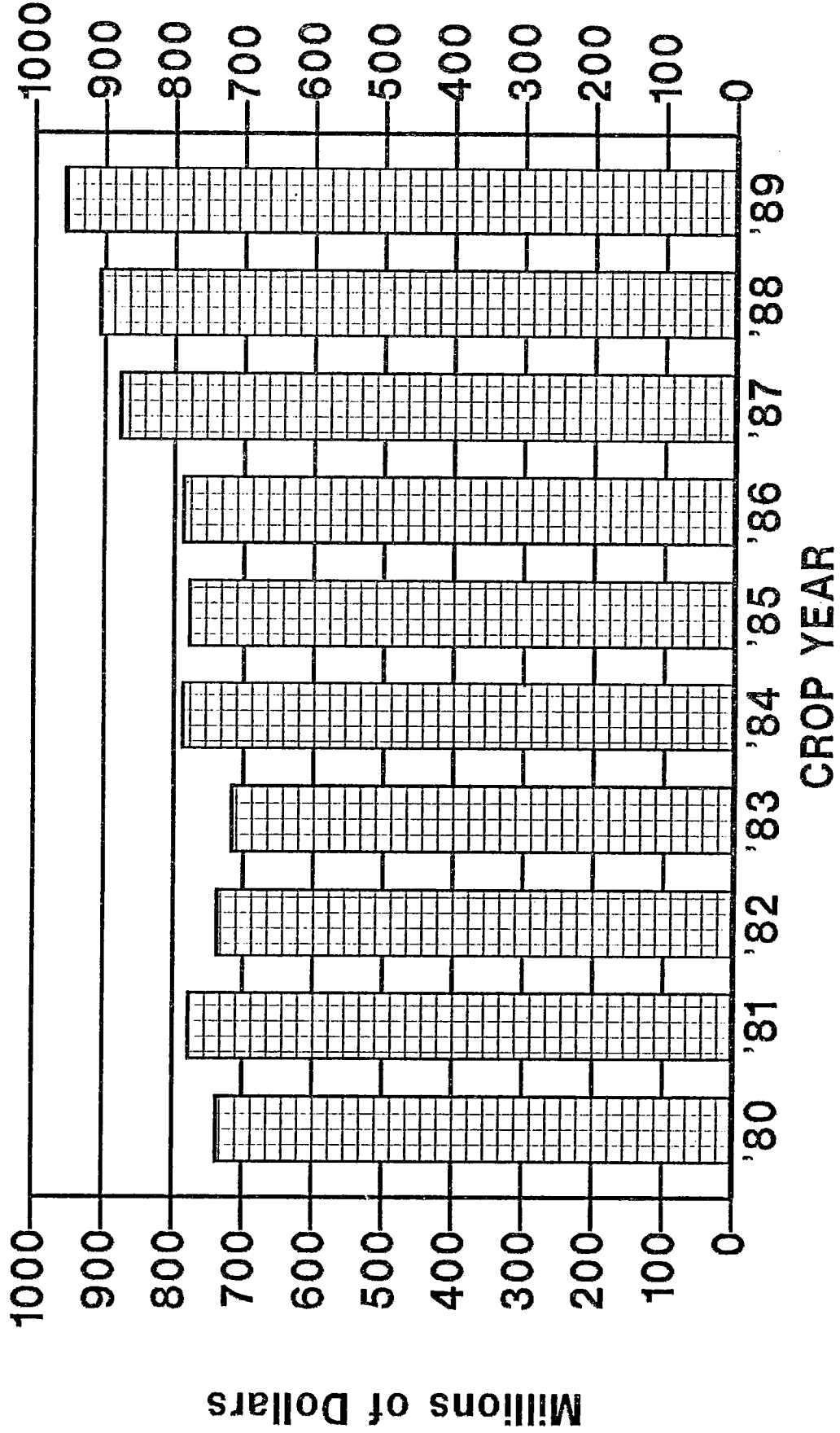
LIVESTOCK & POULTRY PRODUCTS

	Year	Production		Value	
		Total	Unit	Per Unit	Total
Milk, All	1989	21,106,000	CWT	\$	\$258,760,000
(Rev) 1988		20,261,000	CWT		219,312,000
Manufacturing	1989	1,206,000	CWT	11.60	13,990,000
(Rev) 1988		1,518,000	CWT	9.89	15,013,000
Market	1989	19,900,000	CWT	12.30	244,770,000
(Rev) 1988		18,743,000	CWT	10.90	204,299,000
Eggs, Chicken	1989	70,187,000	DOZ		56,173,000
All	(Rev) 1988	75,814,000	DOZ		47,728,000
Hatching	1989	13,184,000	DOZ	1.58	20,831,000
	1988	14,814,000	DOZ	1.41	20,888,000
Market	1989	57,003,000	DOZ	.62	35,342,000
(Rev) 1988		61,000,000	DOZ	.44	26,840,000
Eggs, Turkey	1989	4,409,000	EACH	.70	3,086,000
Hatching	(Rev) 1988	3,584,000	EACH	.55	1,971,000
Wool	1989	30,600	LBS	1.17	35,800
(Rev) 1988		45,000	LBS	1.20	54,000
Total	1989				\$ 318,054,800
(Rev) 1988					269,065,000

SUMMARY

<u>Item</u>	<u>Year</u>	<u>Harvested Acreage</u>	<u>Estimated Value</u>
Fruit & Nut Crops	1989	128,137	\$225,874,000
	(Rev) 1988	127,619	259,218,000
Field Crops	1989	592,488	96,945,000
	(Rev) 1988	599,346	98,053,900
Vegetable Crops	1989	51,836	95,594,000
	(Rev) 1988	47,334	79,249,000
Seed Crops	1989	2,841	2,051,000
	1988	2,361	1,571,000
Nursery Products	1989	1,037	19,189,000
	(Rev) 1988	994	19,696,000
Apiary Products	1989		4,143,400
	(Rev) 1988		4,042,360
Livestock & Poultry	1989		201,296,000
	(Rev) 1988		182,848,000
Livestock & Poultry Products	1989		318,054,800
	(Rev) 1988		269,065,000
<hr/>			
TOTAL	1989	776,339	\$963,147,200
	(Rev) 1988	777,654	913,743,260

Ten Year Summary in Millions of Dollars



TEN YEAR SUMMARY IN THOUSANDS OF DOLLARS

	1980	1981	1982	1983	1984	1985	1986	1987	1988 (Rev)	1989
Fruit & Nut Crops	\$200,687	\$177,259	\$173,461	\$120,770	\$177,040	\$173,285	\$163,053	\$256,544	\$259,218	\$225,874
Field Crops	97,969	95,731	82,943	87,978	89,441	82,304	72,173	81,692	98,054	96,945
Vegetable Crops	34,277	40,678	41,401	43,038	47,049	50,441	63,190	51,965	79,249	95,594
Seed Crops	2,692	4,080	2,395	1,625	1,255	2,994	1,853	1,801	1,571	2,051
Nursery Products	12,910	16,333	13,249	18,021	12,763	13,227	13,326	17,062	19,696	19,189
Apiary Products	3,092	4,227	4,226	3,531	3,759	3,969	3,894	3,845	4,042	4,143
Livestock & Poultry	144,120	166,001	150,504	167,411	171,133	177,578	195,856	190,033	182,848	201,296
Livestock & Poultry Products	247,837	276,876	275,458	278,366	292,183	283,374	277,419	278,364	269,065	318,055
TOTALS	\$743,584	\$781,185	\$743,637	\$720,740	\$794,623	\$787,172	\$790,764	\$881,306	\$913,743	\$963,147