

Stanislaus County Water Agricultural Advisory Board

August 5, 2019

**Rain &
Snow**



Apathy

**The
Hydro-
Illogical
Cycle**



Drought



Panic
&

Concern



Awareness



Status Update Regarding
Compliance with the Sustainable
Groundwater Management Act
(SGMA) in Stanislaus County

Sustainable Groundwater Management Act (2014)

- Agencies electing to become GSAs are given broad powers and authority regarding groundwater management, including:
 - Develop and Implement Groundwater Sustainability Plans (GSPs)
 - 50 Year Planning Horizon
 - 20 Year Implementation Period
 - 5 Year Updates
 - 1 Year Reporting
 - Investigate and determine the sustainable yield of a groundwater basin
 - Collect pertinent groundwater monitoring information
 - Enforcement

Important Milestones

- *GSA formation deadline June 30, 2017*
- GSP adoption deadline:
 - January 31, 2020 (critical condition of overdraft)
 - January 31, 2022 (high & medium priority basins)
- If those deadlines are missed, or if the DWR determines that a plan is not adequate to achieve the sustainability goal, the State Water Resources Control Board ("Board") will have the ability to step in and impose its own "interim" plan until an acceptable local plan is in place.



Groundwater basin/subbasin

Critically Overdrafted Groundwater Basins

DWR Region Office boundary

County boundary

0 15 30 60 Miles

Critically Overdrafted Basins

Basin Number	Basin/Subbasin Name
North Central Region	
5-22.01	Eastern San Joaquin
South Central Region	
3-01	Soquel Valley
3-02	Pajaro Valley
3-04.01	180/400 Foot Aquifer
3-04.06	Paso Robles Area
3-08	Los Osos Valley
3-13	Cuyama Valley
5-22.04	Merced
5-22.05	Chowchilla
5-22.06	Madera
5-22.07	Delta-Mendota
5-22.08	Kings
5-22.09	Westside
5-22.11	Kaweah
5-22.12	Tulare Lake
5-22.13	Tule
5-22.14	Kern County

Total number of Basins/subbasins: 17

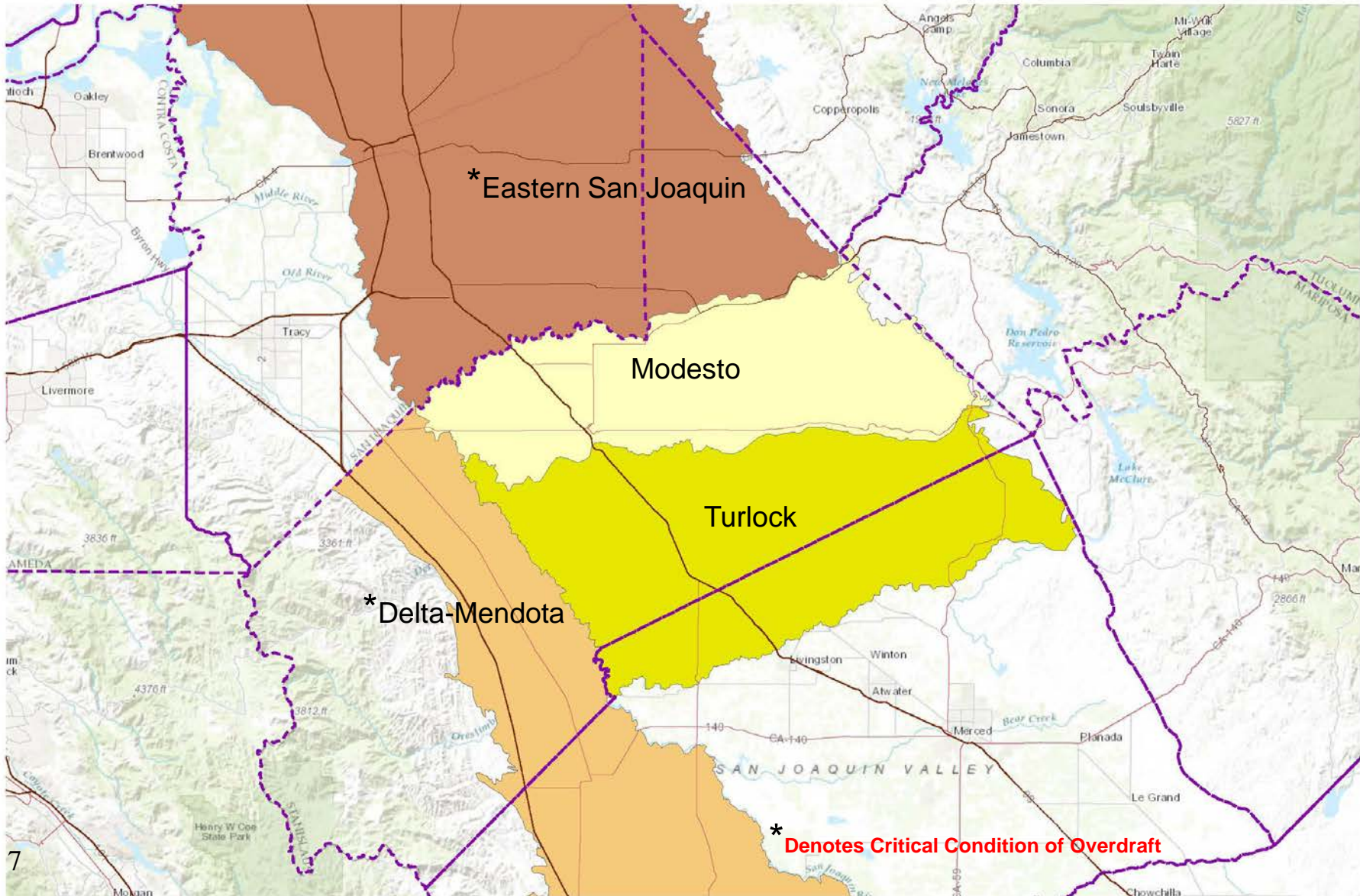
January 1, 2016



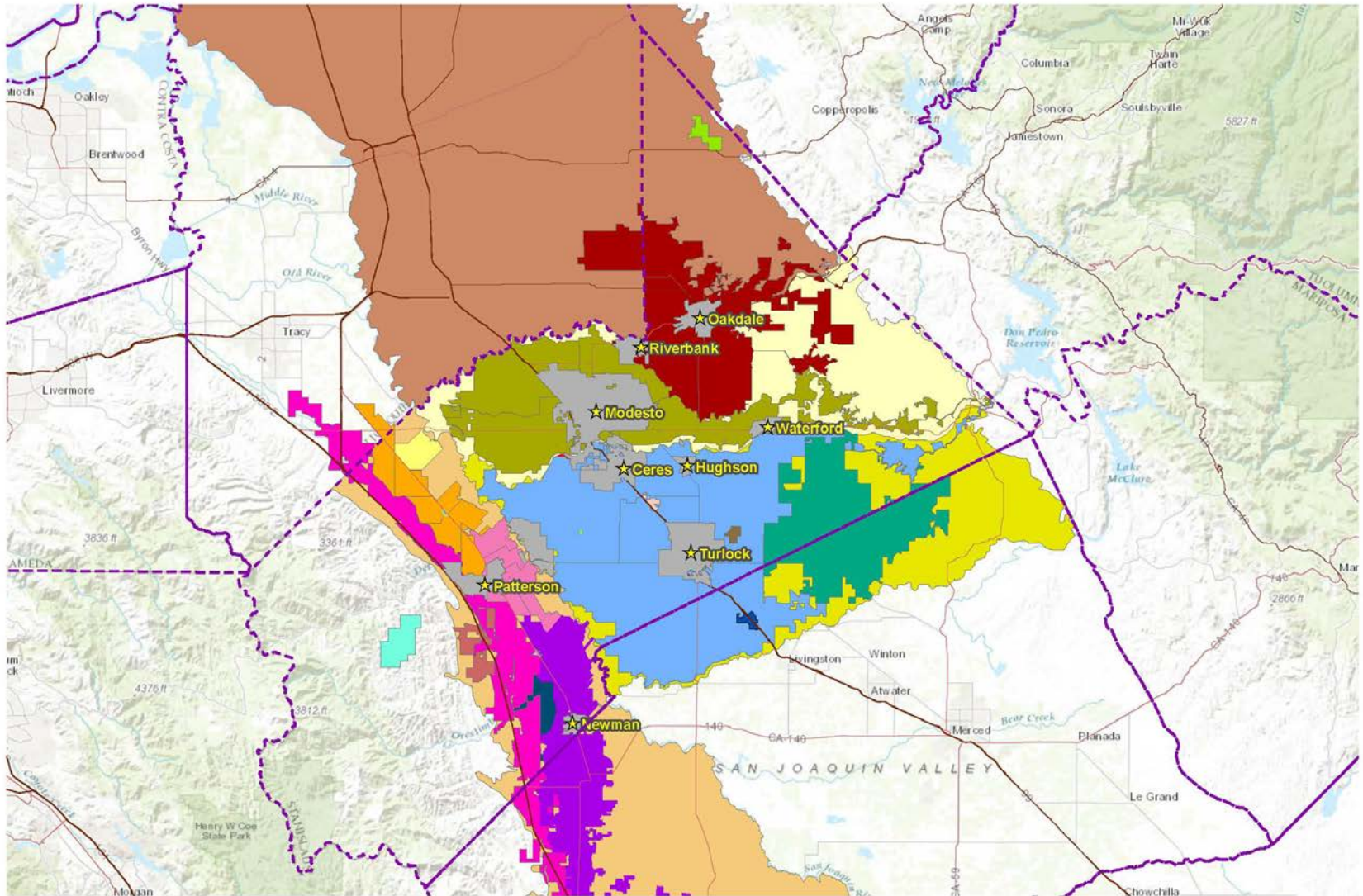
North Central Region Office

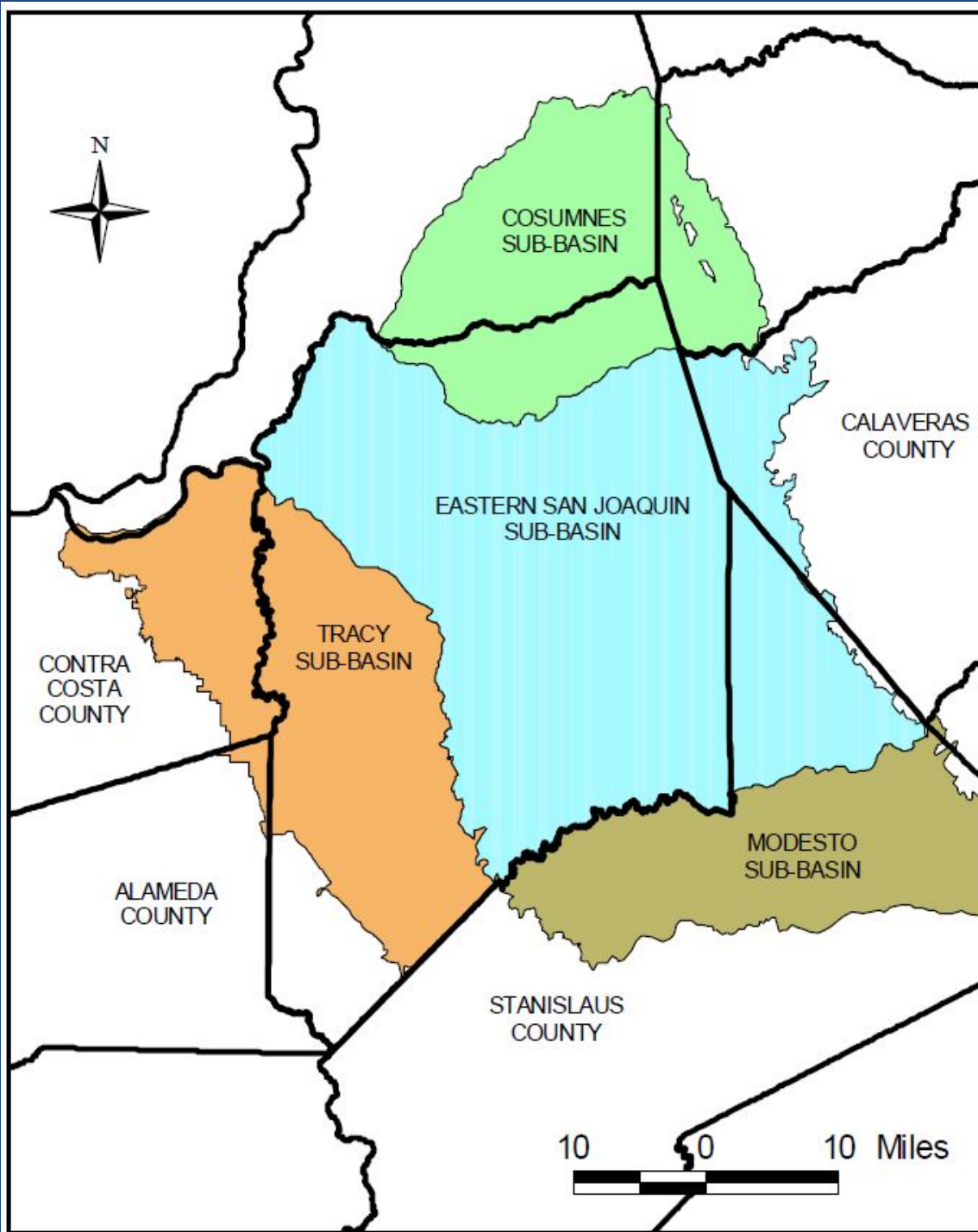
South Central Region Office

Stanislaus County Groundwater Basins

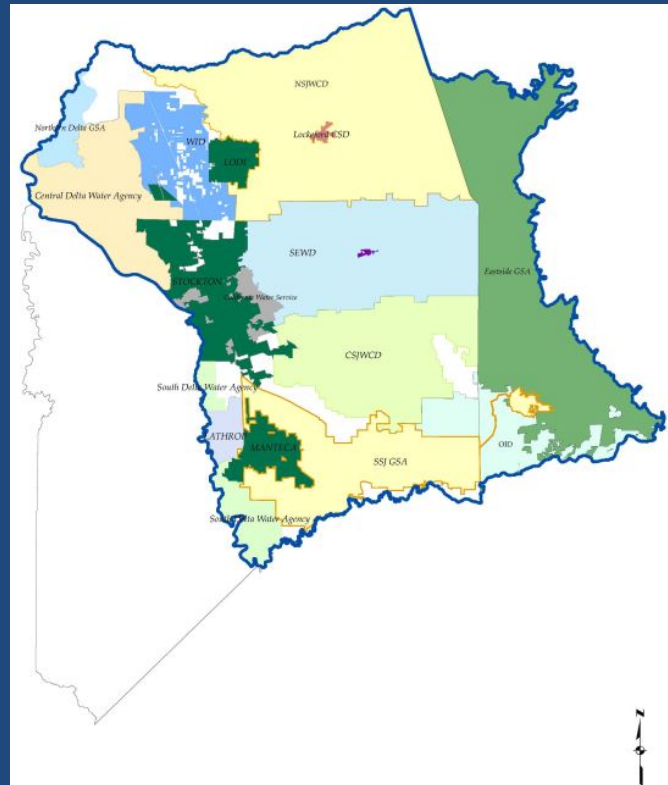


Stanislaus County Water Agencies





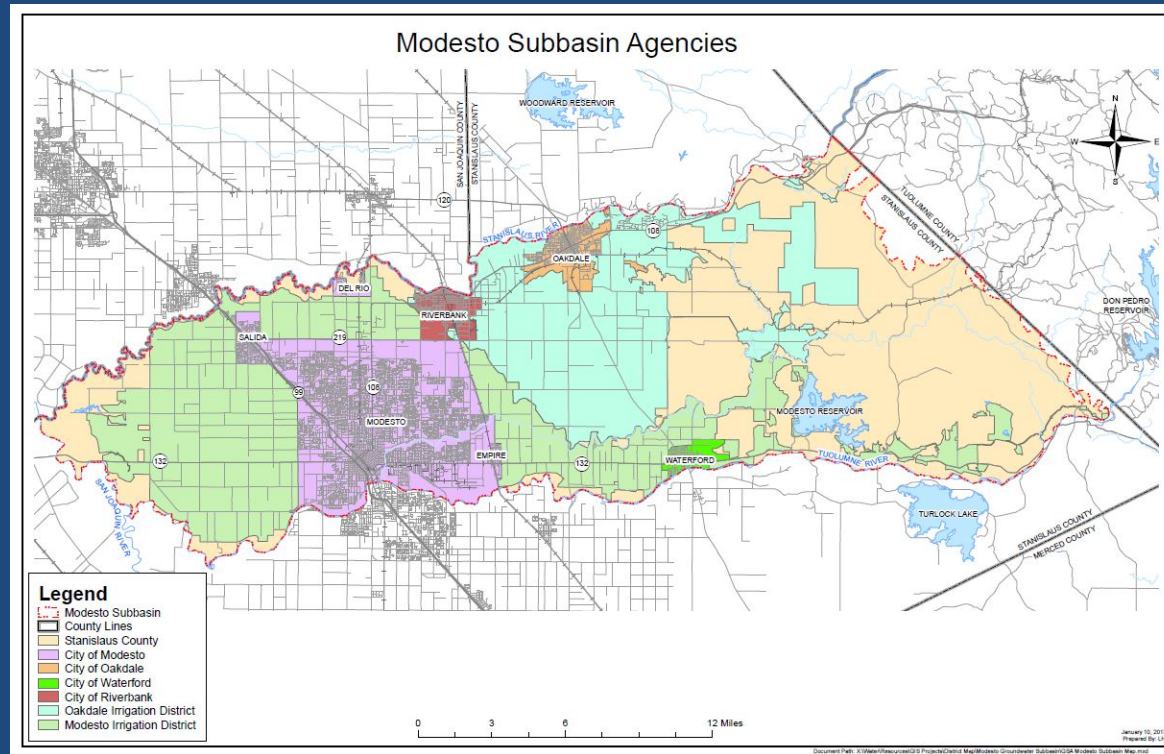
Eastern San Joaquin Groundwater Basin GSAs



Eastern San Joaquin Subbasin GSAs

- City of Lodi
 - City of Manteca
 - City of Stockton
 - Linden CWD
 - Stockton East WD
 - Central Delta Water Agency
 - South Delta Water Agency
 - Central San Joaquin Water Conservation District
 - North San Joaquin Water Conservation District
 - *Eastside San Joaquin GSA*
- Oakdale ID
 - South San Joaquin ID
 - Woodbridge ID
 - Central Delta WD
 - Linden CWD

Modesto Groundwater Basin



Stanislaus & Tuolumne Rivers Groundwater Basin Association GSA

City of Modesto

City of Oakdale

City of Riverbank

City of Waterford

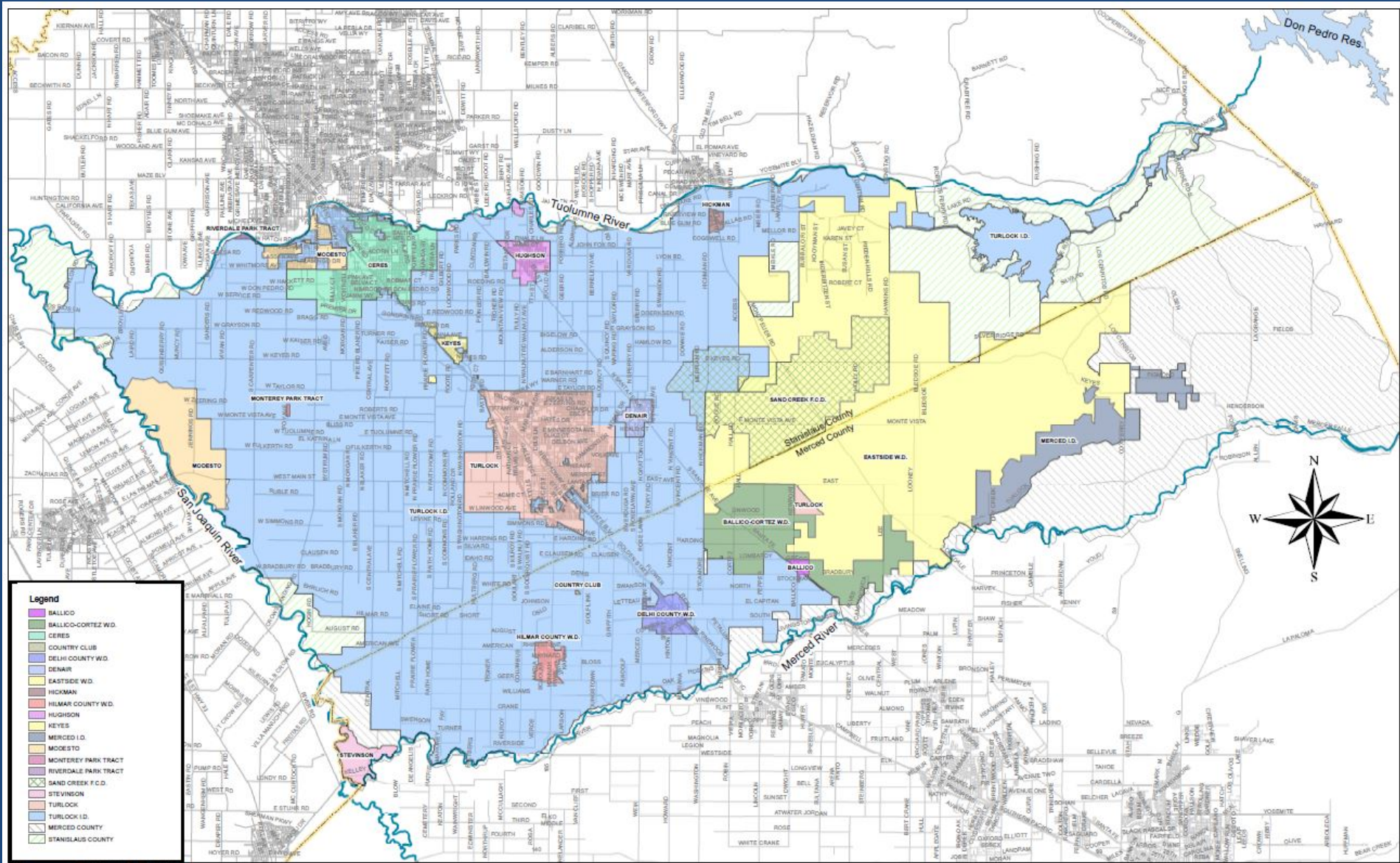
Oakdale ID

Modesto ID

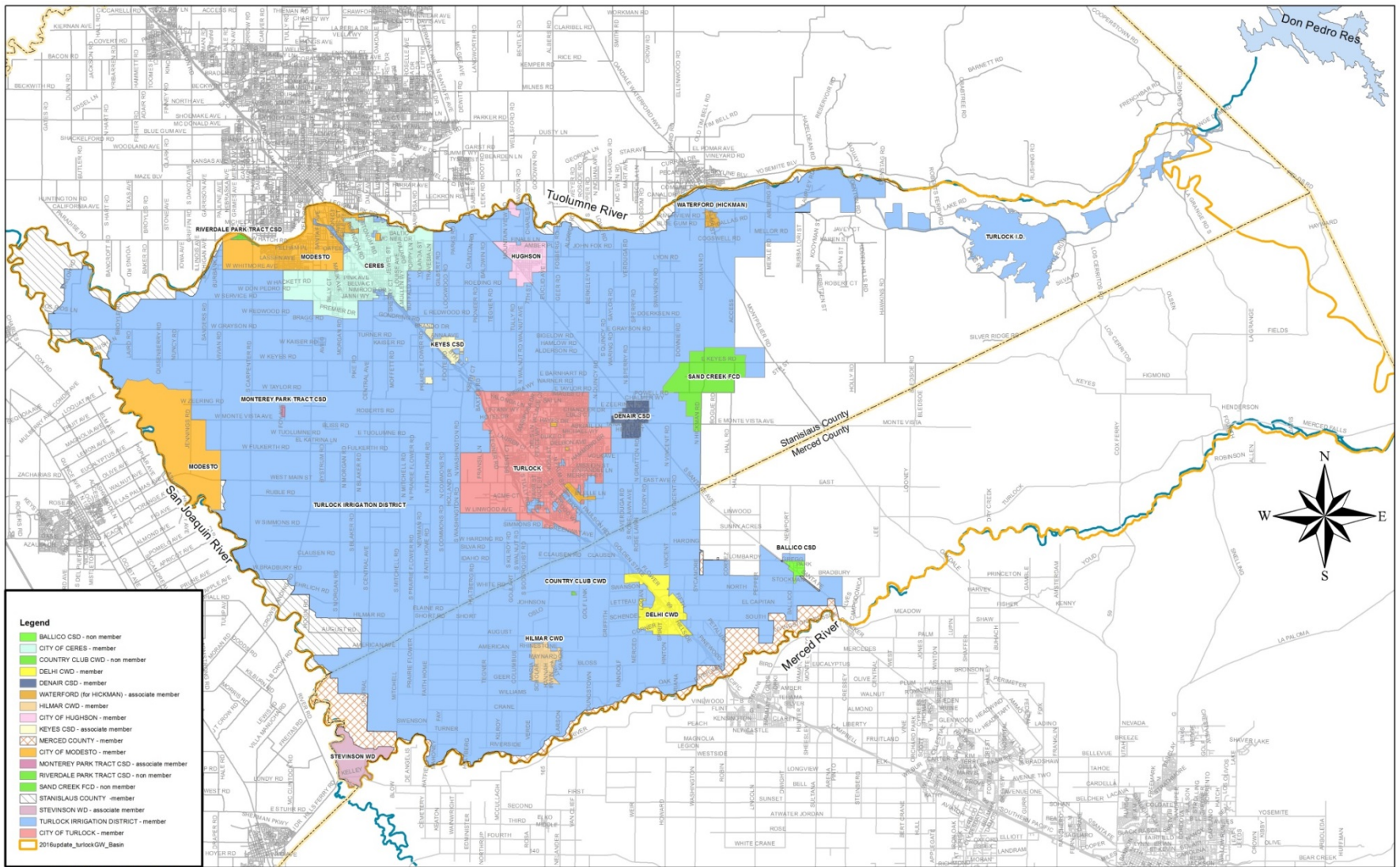
Stanislaus County

*Tuolumne County**

*Formed separate GSA and “linked”
to STRGBA via separate Cooperation
Agreement with Stanislaus County



West Turlock Subbasin GSA



- Legend**
- BALICO CSD - non member
 - CITY OF CERES - member
 - COUNTRY CLUB CWD - non member
 - DELHI CWD - member
 - DENAIR CSD - member
 - WATERFORD (HICKMAN) - associate member
 - HILMAR CWD - member
 - CITY OF HUGHSON - member
 - KEYES CSD - associate member
 - MERCED COUNTY - member
 - CITY OF MODESTO - member
 - MONTEREY PARK TRACT CSD - associate member
 - RIVERDALE PARK TRACT CSD - non member
 - SAND CREEK FCD - non member
 - STANISLAUS COUNTY - member
 - STEVINSON WD - associate member
 - TURLOCK IRRIGATION DISTRICT - member
 - CITY OF TURLOCK - member
 - 2016update_turlockGW_Basin



West Turlock Subbasin Agencies

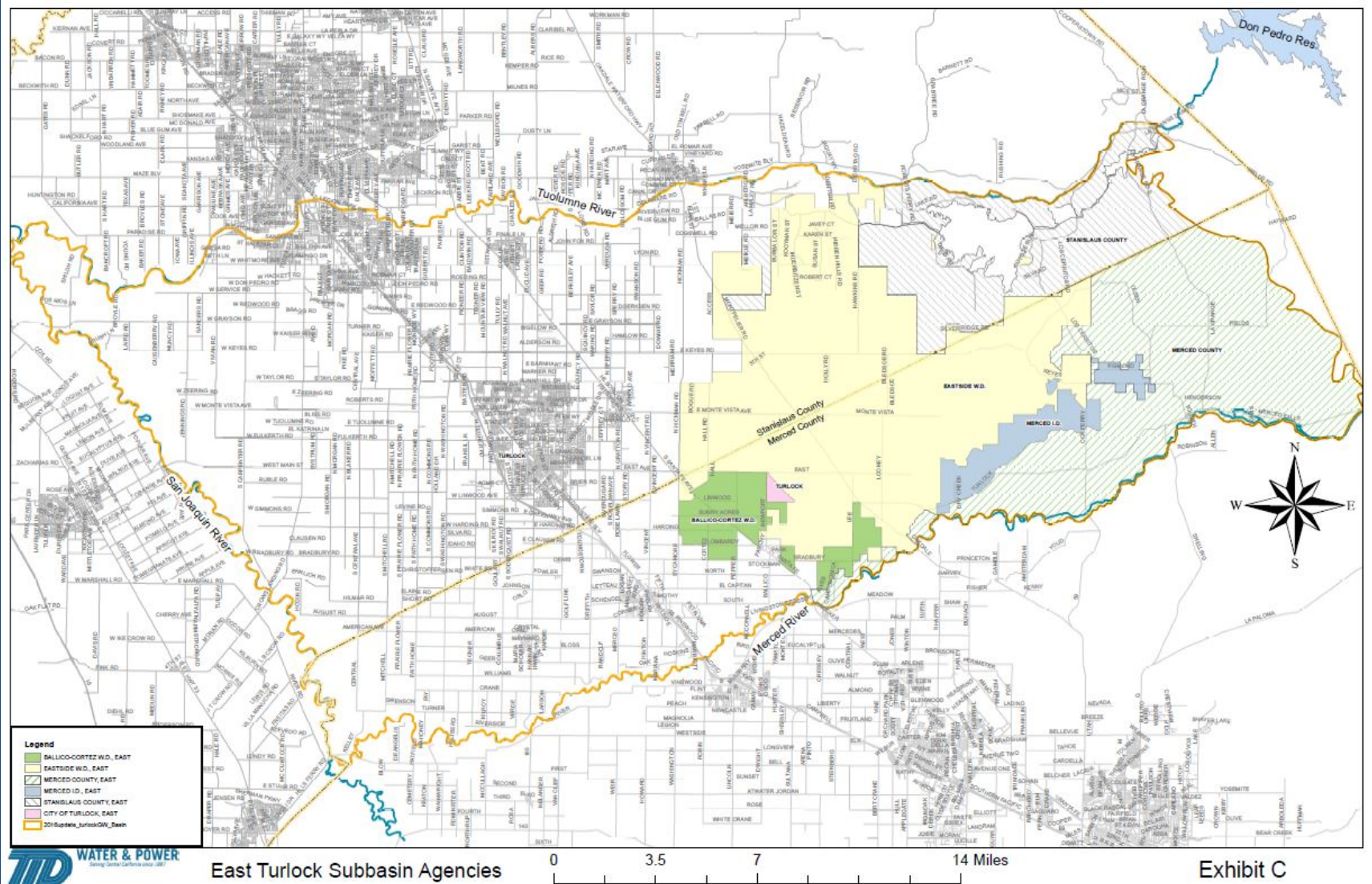


Exhibit B

West Turlock Subbasin GSA

- City of Ceres
 - City of Hughson
 - City of Modesto
 - City of Turlock
 - Denair CSD
 - Associate Members:
 - Keyes CSD
 - City of Waterford
- Turlock Irrigation District
Merced County
Stanislaus County
Delhi County Water District
Hilmar County Water District

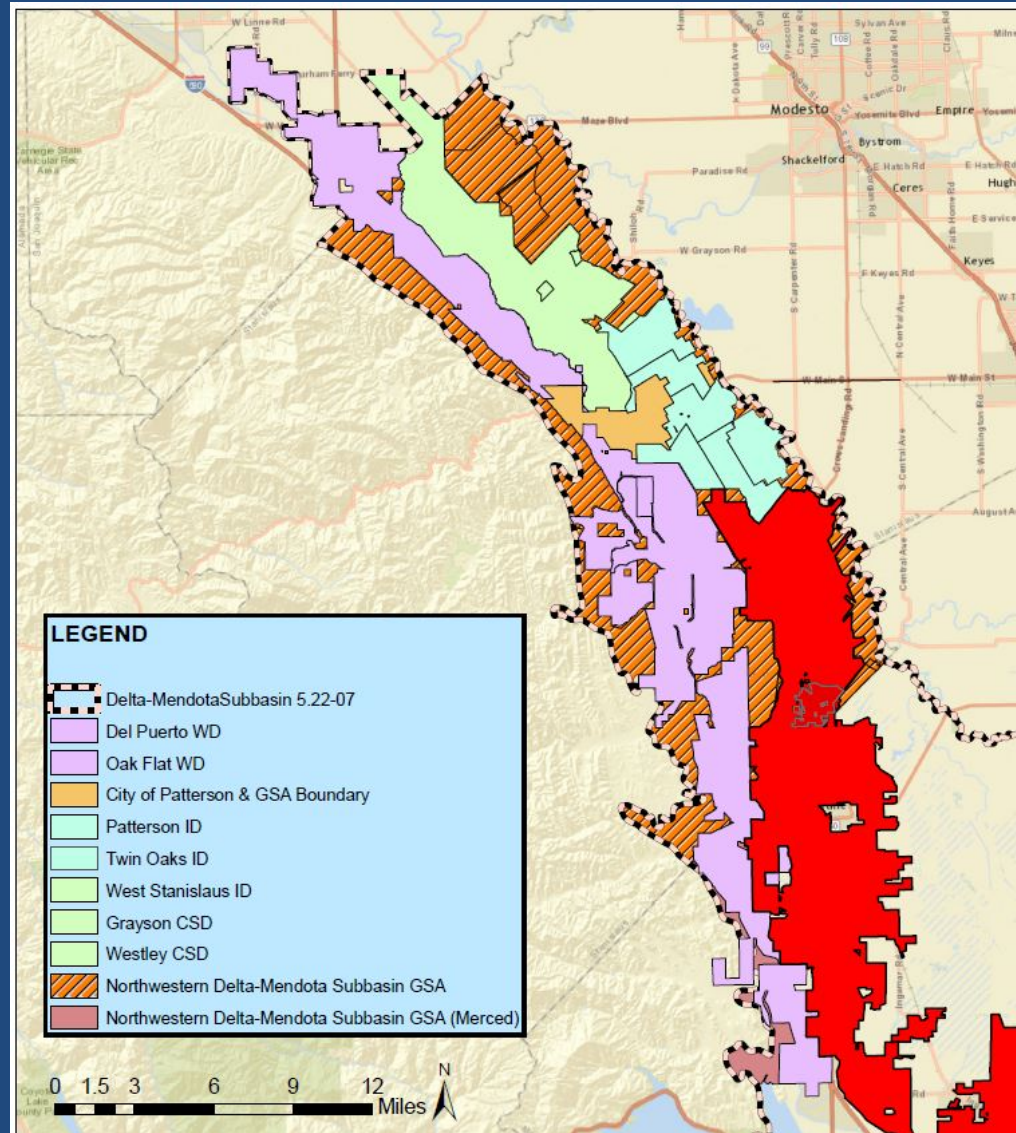
East Turlock Subbasin GSA



East Turlock Subbasin GSA

- Eastside WD
 - Ballico-Cortez WD
 - Merced Irrigation District
 - Merced County
 - Stanislaus County
 - City of Turlock *
-
- * Associate Member

Delta-Mendota Subbasin –Northern Group



Delta-Mendota Groundwater Basin – Northern Group GSAs

City of Patterson

Del Puerto WD

West Stanislaus ID

Patterson ID

Northwestern Delta-Mendota GSA

Merced & Stanislaus Counties

Summary of GSA Formation and GSP Preparation

Delta-Mendota Subbasin

Multiple-GSAs/Multiple GSPs (Formal “Coordination Agreement”)
Northwestern Delta-Mendota GSA (MOU)

Turlock Subbasin

2 GSAs/1 GSP
East Turlock & West Turlock GSA (JPAs)

Modesto Subbasin

1 GSA/1 GSP
Stanislaus & Tuolumne Rivers Groundwater Basin Association GSA (MOU)

Eastern San Joaquin Subbasin

Multiple-GSAs/1 GSP
Eastside San Joaquin Groundwater Authority (JPA)

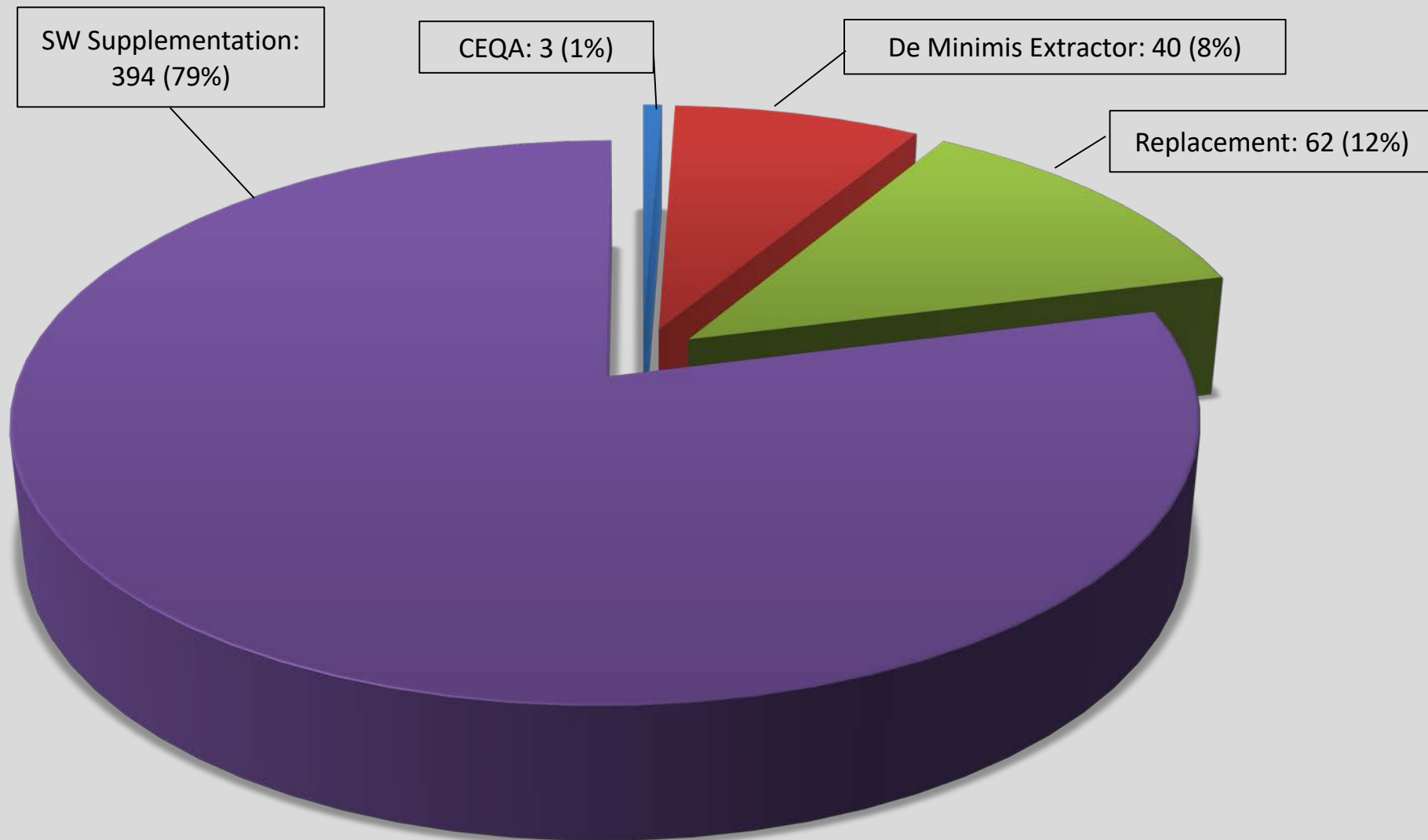
Current Activities

- All GSAs made June 30, 2017 deadline
- Each of the four basins gained approval for State grants
 - Eastern San Joaquin & Delta-Mendota = \$1.5 million
 - Modesto & Turlock = \$ 1.0 million
 - GSPs are under preparation (**Substantial Compliance**)
 - Land Use/ Water Use data collection (baseline, existing and forecasted)
 - Basin Hydrologic Conceptual Model (HCM) and cross-sections
 - Various groundwater models being used for Water Budget
 - Project List (managed recharge) and Potential Funding
- Public Drafts released mid-summer 2019 for ESJ and D-M basins
- Individual agency review and approval targeted for December 2019
- January 31, 2020 filing deadline with DWR (Mod/Tur => 2 years later)

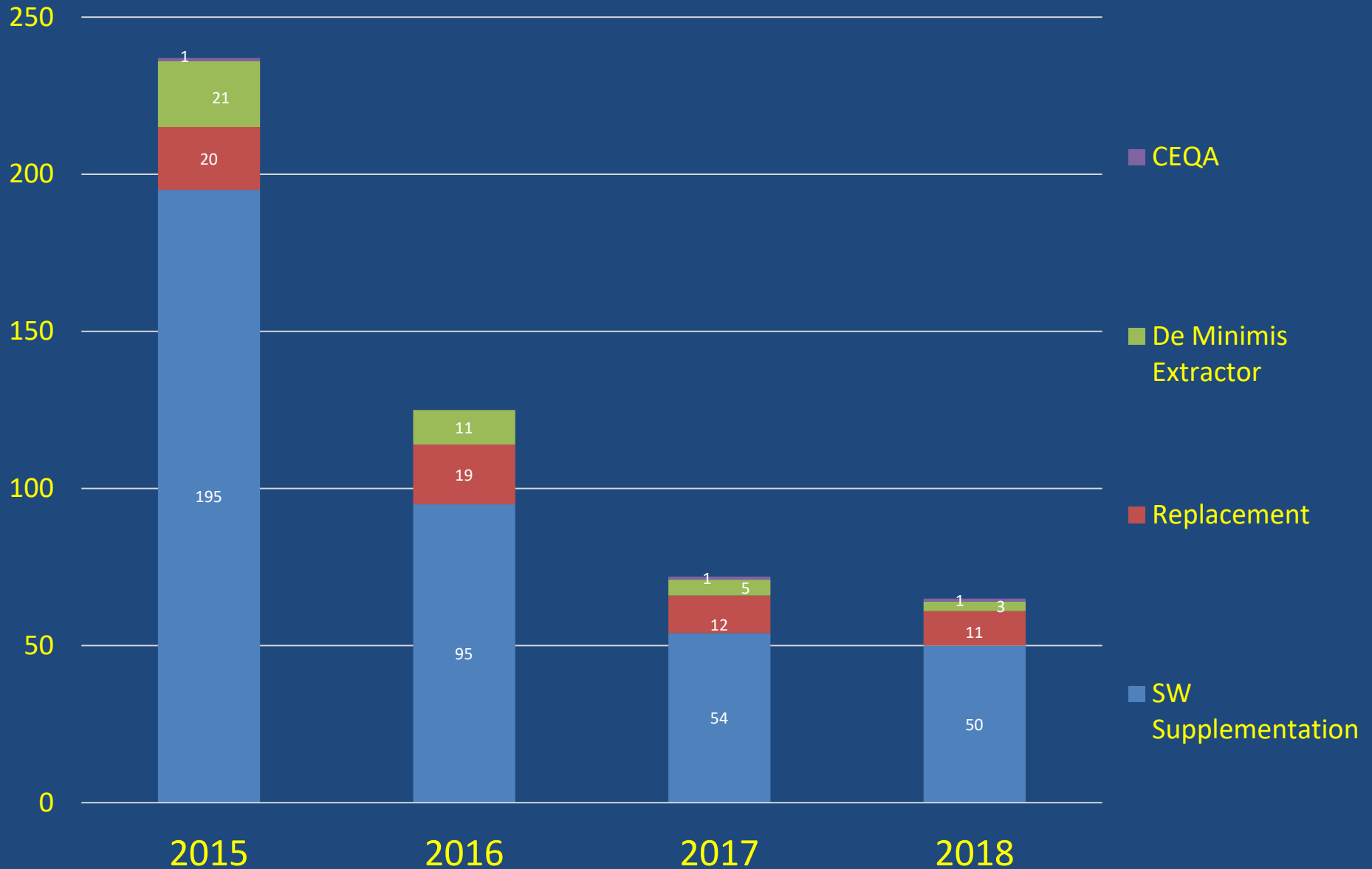
Questions & Discussion

Stanislaus County Well Permitting Program Activity Status

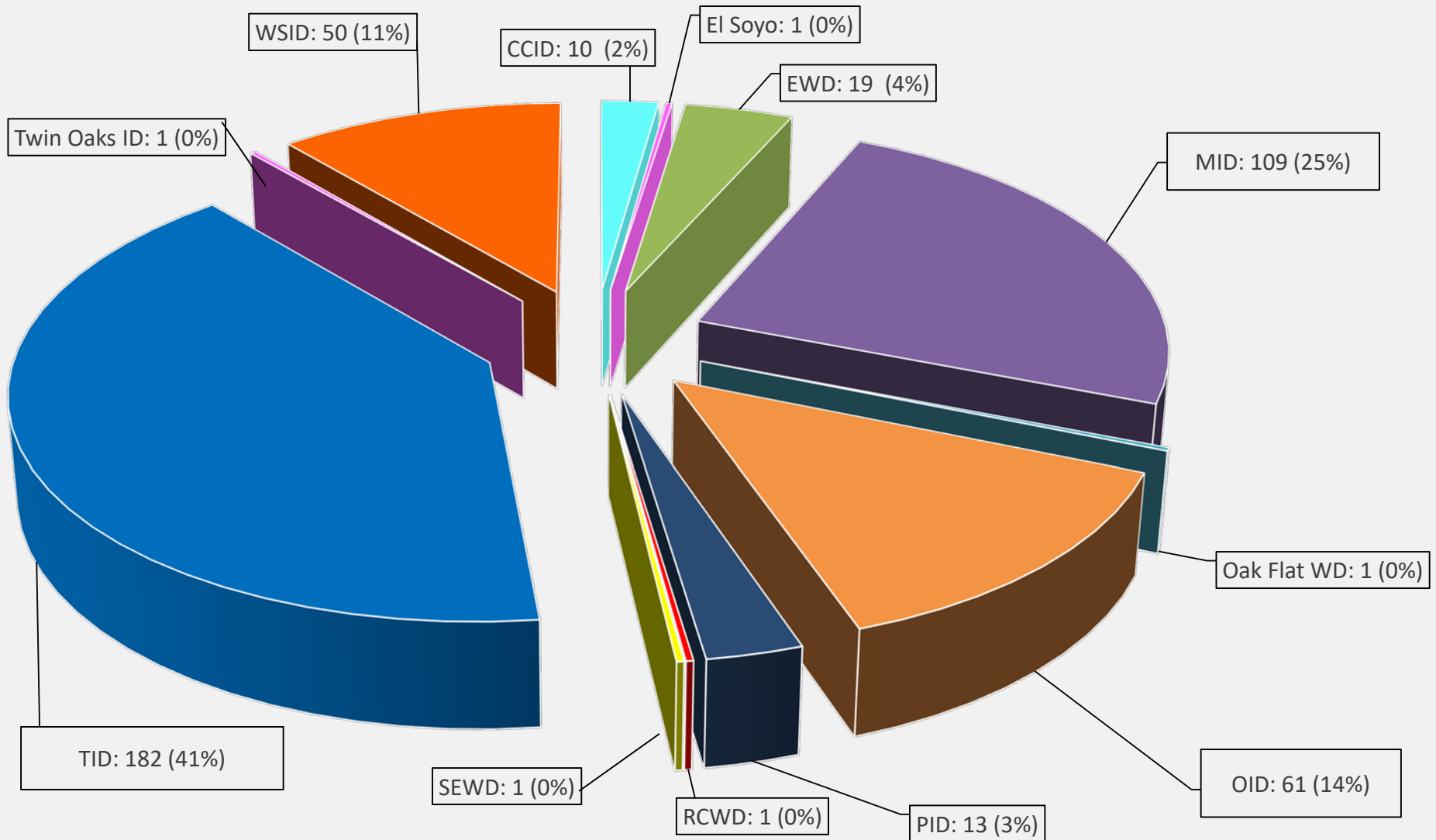
**Stanislaus County
Agricultural-Irrigation Water Well Permits Issued
by Category
January 2015 - December 2018**



Breakdown by Year



Public Water Agencies 2015 - 2018



Questions & Discussion